



Design : "cascades" - paroi coulissante

Mécanisme : profil, chariot, rouleurs

Textile : feutre en épaisseur 3mm

Matière : 100% laine - densité 300gr/m² - poids 900gr/m²

Propriétés : épais, poreux & souple
doux & agréable au toucher
excellent absorbeur de son & d'air
hydrofuge
difficilement inflammable
opaque à la lumière

Dimensions : sur mesure

Couleurs : choix de 48 couleurs

Classement : naturellement M2

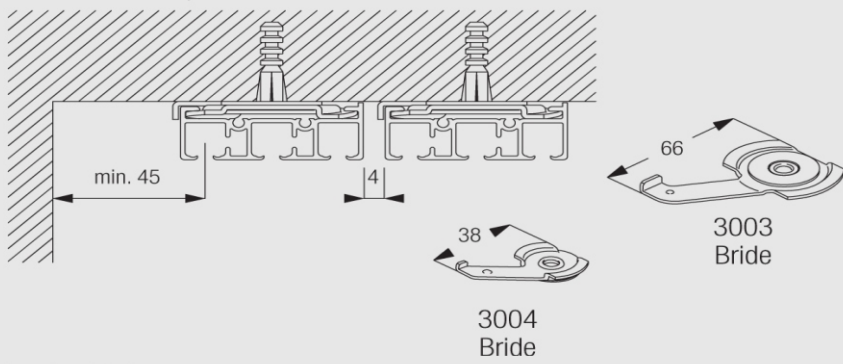
traitement M1 possible en surface

Entretien : aspirateur pour nettoyer la poussière
nettoyage à sec pour supprimer les taches

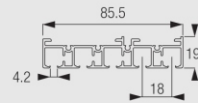
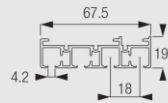
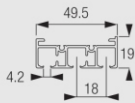
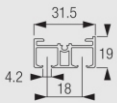
Spécifications du système d'accroche sur profil à plusieurs voies :

Options de pose

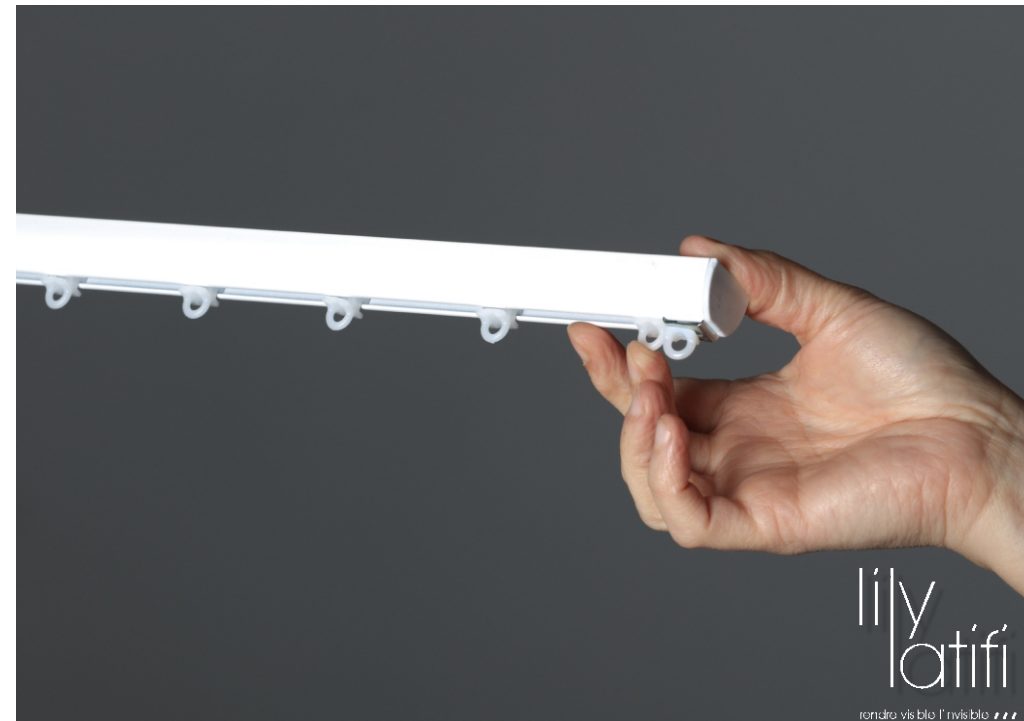
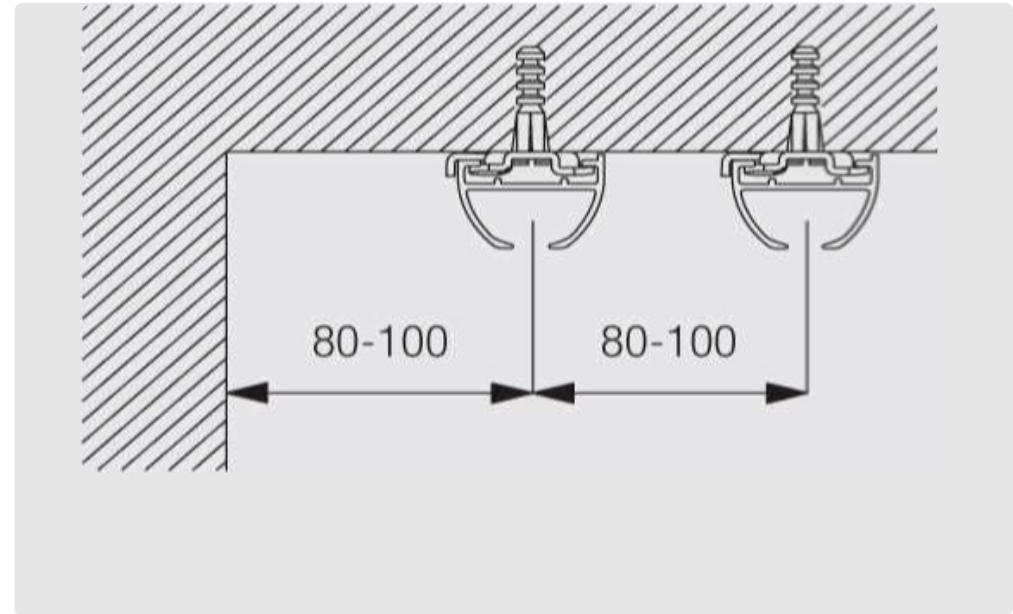
Fixation directe plafond avec la bride invisible 3003 et 3004

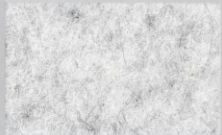


Profils pour Parois Japonaises 2, 3, 4, et 5 canaux

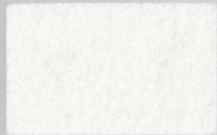


Spécifications du système d'accroche sur profil mono voie :





06 marbre



03 écru



93 tournesol



19 bleu pastel



50 aqua



48 amande



54 corail



51 rose poudré



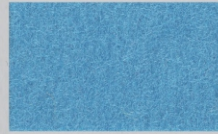
07 pierre



86 macadamia



23 moutarde



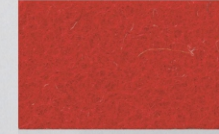
33 bleu ciel



64 turquoise



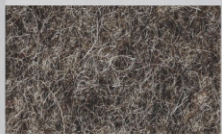
25 canary



55 coquelicot



37 rose



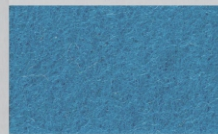
47 poivre



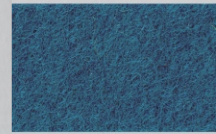
38 caramel



96 curry



34 bleu persan



39 canard



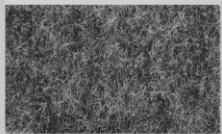
30 pomme



11 rouge



32 fuschia



01 anthracite



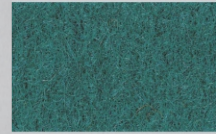
36 béton



35 taupe



10 bleu roi



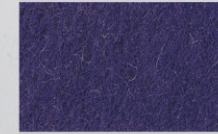
49 émeraude



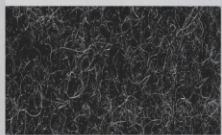
24 olive



20 mangue



13 violet



08 graphite



16 pigeon clair



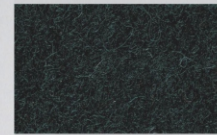
29 brique



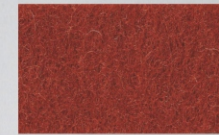
12 bleu indigo



41 bouteille



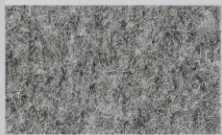
43 foret



66 rouille



68 prune



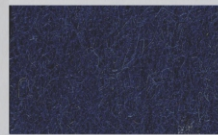
99 bicolore avec dos en 08



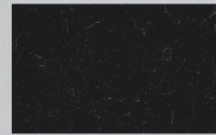
17 pigeon foncé



67 cannelle



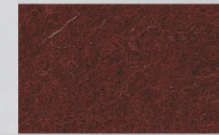
18 blue marine



02 noir



42 khaki



21 bordeaux



26 aubergine